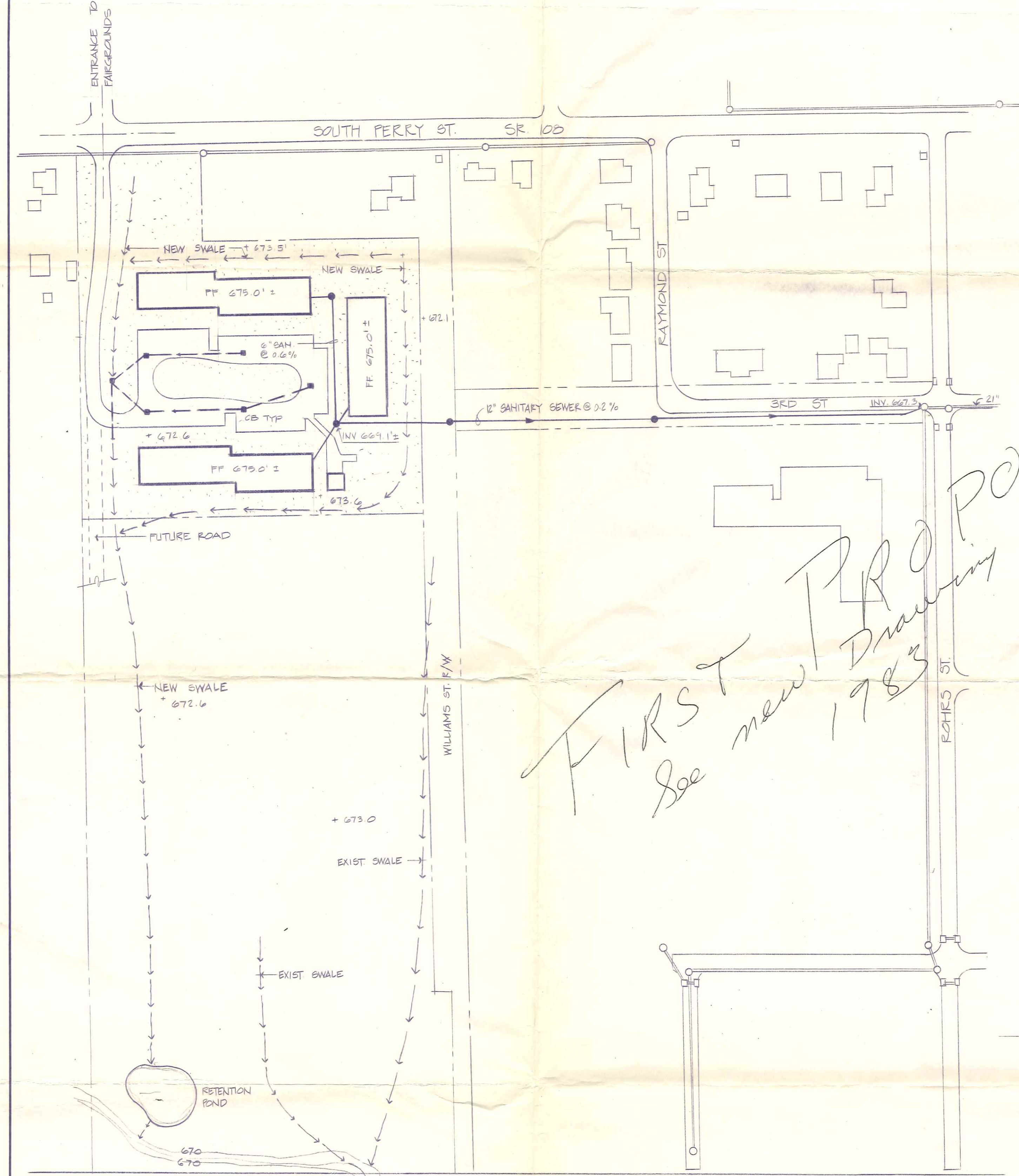


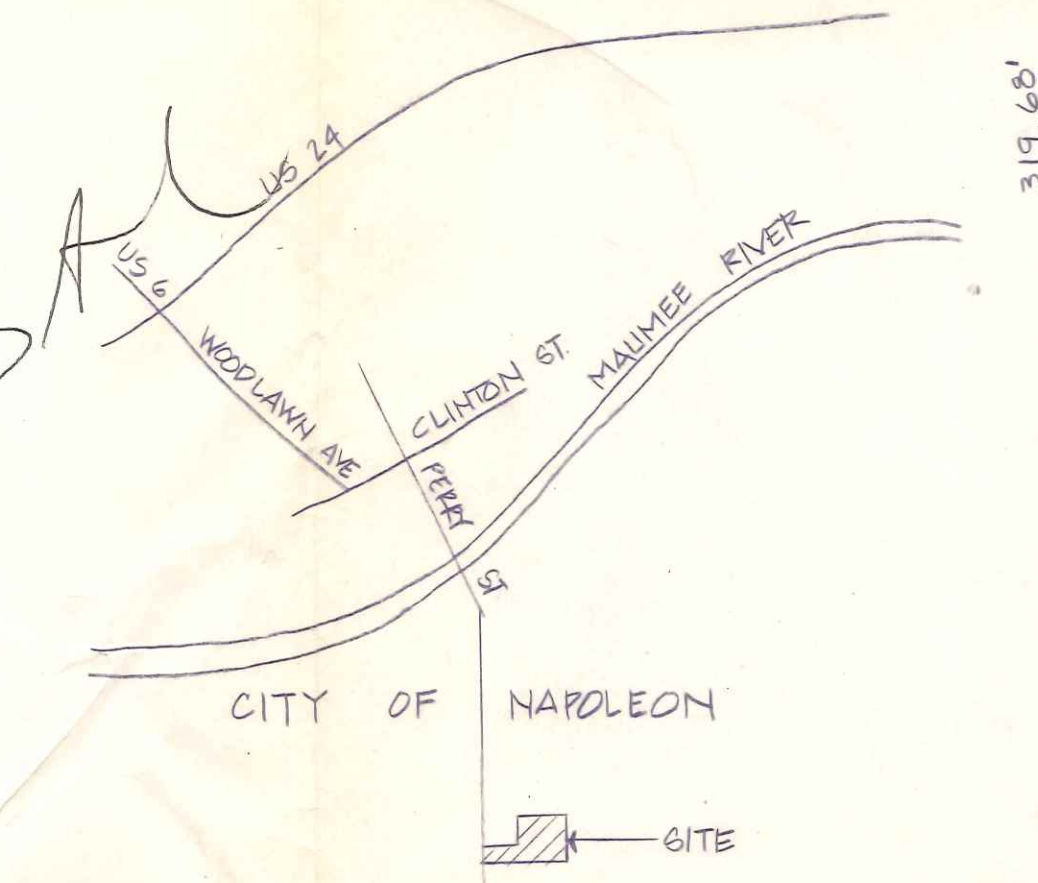
DATA

ONE BEDROOM	50	UNIT
MANAGER	1	UNIT
TOTAL	51	UNITS
PARKING SPACES	51	102
AREA DATA		
LIVING UNITS	30,971	
COMMON AREAS	7,105	
TOTAL AREA	38,156	S.F.
SITE DATA		
BUILDING AREA	38,156 SF	= 0.88 ACRES
WALKS & DRIVES	42,576 SF	= 0.98
GREEN SPACE	158,318 SF	= 3.52
TOTAL SITE	234,050 SF	= 5.38 ACRES

3/4  
76

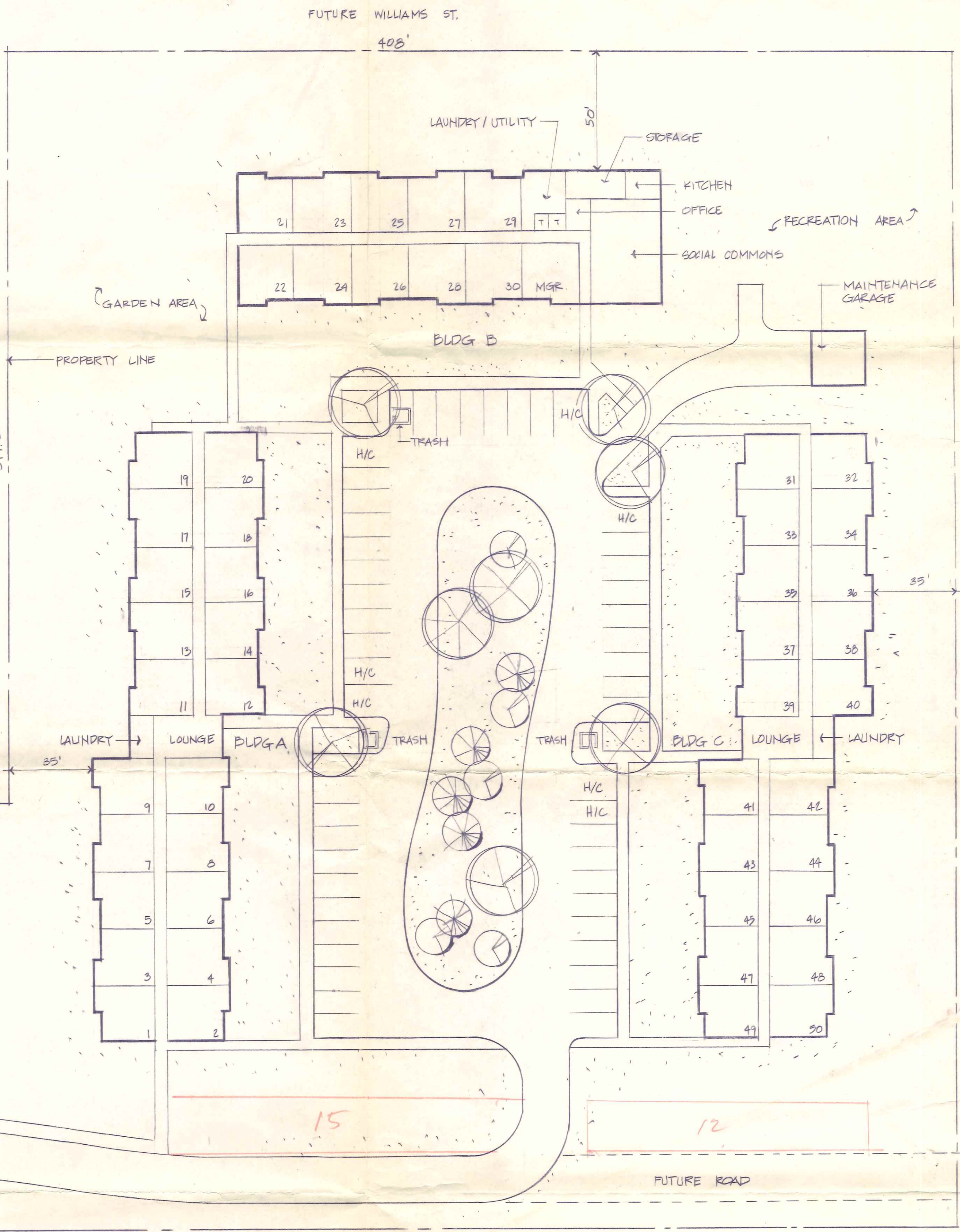


STORM DRAINAGE & SANITARY SEWER LAYOUT  
1" = 100'

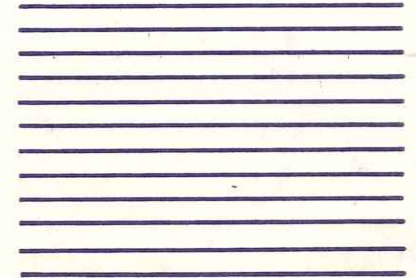


LOCATION MAP

FIRST  
See new  
1983  
DRAWING



SITE PLAN  
1" = 30'



**SAMBORN, STEKETEE, OTIS and EVANS, INC.**  
ENGINEERS - ARCHITECTS - PLANNERS

1001 MADISON AVE.  
TOLEDO OHIO 43624

Project Title  
**LUTHERAN HOUSING SERVICES INCORPORATED**  
2411 SEAMAN  
TOLEDO, OHIO

Drawing Title  
**SITE : NAPOLEON, OHIO**

Drawn	LES	Checked	TFM/JH
Approved		Date	
FOR OWNERS & ZONING APPROVAL			4.27.81
Revision or Issue			Date
Commission No.	<b>81488</b>	Drawing No. <b>SD 1</b>	

1036 S. Perry St.